



Emeryville Greenway

Marchant Building Mural on the Emeryville Greenway

- Ian Ross
- 1222 67th St
- Pre-2017
- Series: Other Mural (Other NGO, Gov Agency or Business)



Wall Between Us

- Sacha Shamszad
- 1276 Ocean Ave
- 2020
- 1% Private Public Art - Site Specific





-



Look Closely

- [WOWHAUS Art and Design](#) (Ene Osteraas-Constable and Scott Constable)
- One of 10 Stone/Rock/Granite sculptures
- 2007
- City Commission
- Wowhaus worked closely with the community in developing the artwork...which reflect local flora and fauna...The artists etched photographs into granite elements that are embedded into the sculptures...Subtle reflections on nature and the environment are to be found through the artwork when you look closely... In "Look Closely," the visitor can explore how things, places, and relationships acquire meaning, and how a complex site-specific public art project connects communities to their current ecological and societal realities.





-





-
- A large, oval-shaped, metallic sculpture, possibly made of bronze, is set into the ground in a grassy field. The sculpture has a circular opening in its center, which reveals a dark, abstract, and textured interior. The sculpture is surrounded by green grass and a patch of bare earth. The lighting suggests it is daytime, with shadows cast on the grass.



Look Closely

- [WOWHAUS Art and Design](#) (Ene Osteraas-Constable and Scott Constable)
- One of 10 Stone/Rock/Granite sculptures
- 2007
- City Commission



-
- A curved, light-colored concrete curb with four black circular markers spaced along its top edge, set against a background of green foliage.



Look Closely

- [WOWHAUS Art and Design](#) (Ene Osteraas-Constable and Scott Constable)
- One of 10 Stone/Rock/Granite sculptures
- 2007
- City Commission



All Together Now

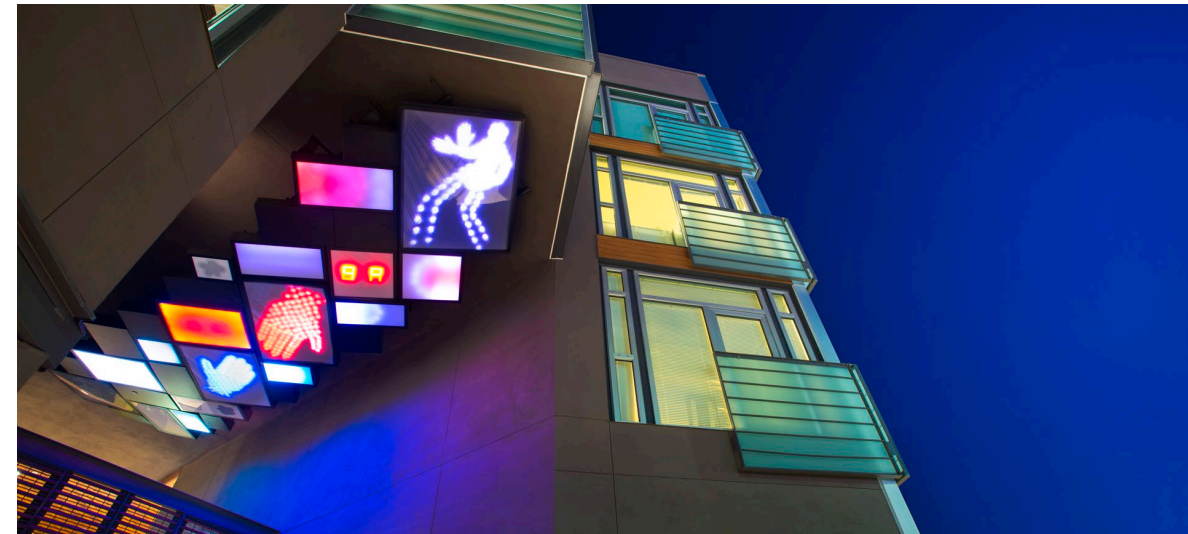
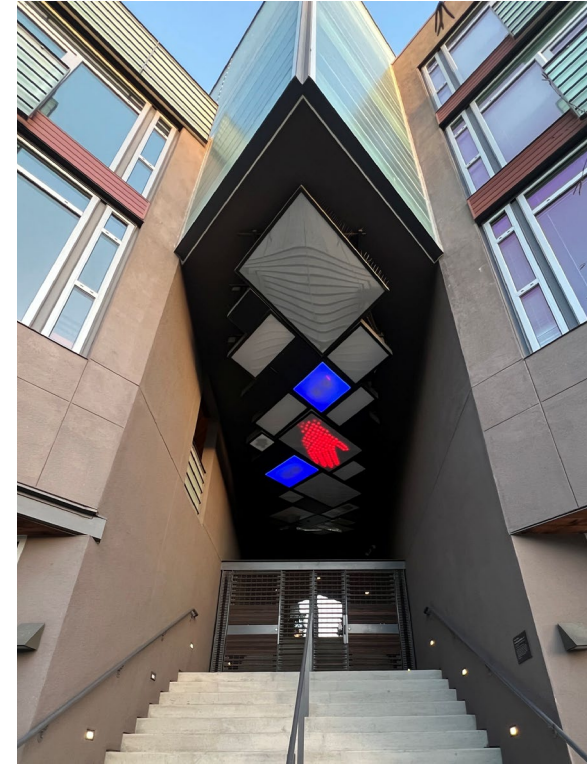
- [Frederick Gelb](#)
- 5800 Hollis Street
- 14'x10'x6'
- Other Metals (Brass, etc.)
- 2012
- 1% Private Public Art - Wareham Development
- Since being diagnosed with cancer and after his successful recovery, the artist realized his passion to sculpt. In only a few years, he has finished numerous fascinating sculptures. Inspired by The Beatles often used phrase All Together Now, The artist has created a statement for the finest hopes, dreams and goals of humanity, striving together as one to enhance the progress of all.



Crossing Signal Mosaic

- [Thérèse Lahaie](#)
- 1333 Powell Street
- 5'x28'x8' Steel, acrylic, DMX controlled LED cabinets
- 2015
- 1% Private Public Art - Wareham Development
- In conversation with the adjacent intersection at Stanford and Hollis Streets, "Pedestrian Maneuvers," presents the familiar iconography of the crossing signals that govern our everyday movement and constructs reverent and irreverent relations between the signals, and between the signals and their attendant viewers.

<https://vimeo.com/139659009>



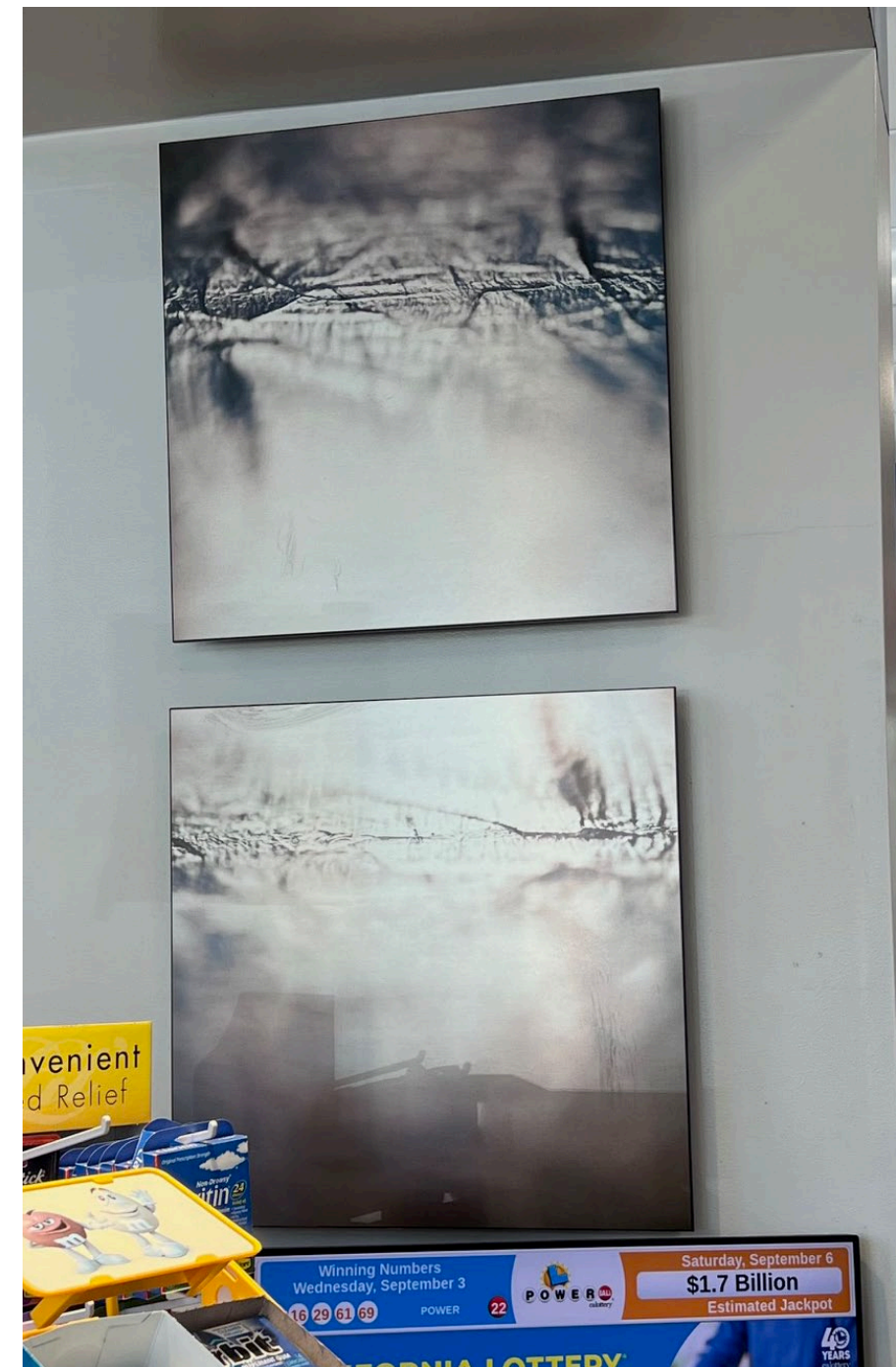
Carmel

- [Bob Bennet](#)
- 1400 Powell
- 3' x 3' Bronze sculpture
- 1% Private Public Art
- Art is a way of life for the Bennett family. Our path was paved by two visionaries, Tom & Bob Bennett and their legacy is still very strong and alive. We have decades of creative experience with us as we push forward into the future. We are driven to honor the incredible body of work produced by the Bennett brothers during their prolific careers, while continuing to grow and create new forms of fine art for our collectors world wide.



His Voice and Her Voice

- Maite Benito Agahnia
- 1400 Powell
- Two works 17 x 17 Digital photography on metal
- 1% Private Public Art





-
- A large mural on a red wall depicting a figure in a red robe, possibly a religious or historical figure, surrounded by green foliage. The mural is set against a clear blue sky and modern buildings in the background.



Sign of the Times

Trace upside down with suitcase

- [Seyed Alavi](#)
- Hollis St & Powell St
- 2009
- 32"W x 24"D x 65"H
- Sign of the Times
- The image shows a bright yellow utility box with a simple, black, minimalist mural painted on it. The utility box depicts a person's silhouette is traced upside down anchored by a suitcase. The artwork has a clean silhouette-like style.



Harmony

- [Insane51](#)
- 5770 Peladeau Street
- 2022
- PangeasSeed Murals
- Plastics are the most common form of marine debris. Once in the water, plastic debris never fully biodegrades. Fish, seabirds, sea turtles, and marine mammals can become entangled in or ingest plastic debris, causing suffocation, starvation, and drowning. Plastic contamination will soon be catastrophic for human health.



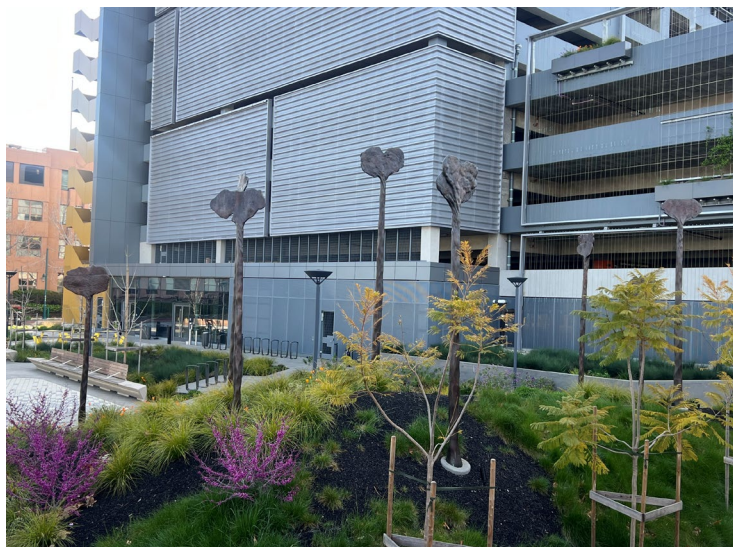
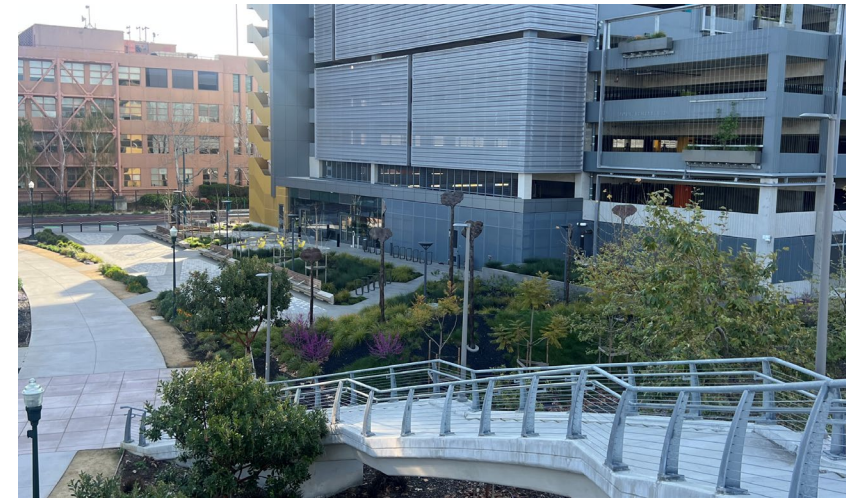
Ascend

- [Joey Rose](#)
- 1411 Powell St
- 85' x 25' and 30' x 14'
- 2018
- City Murals
- The mural references native species, as well as an ode to The Big Lebowski's marmot



Searching for a Promissory Note

- [Mildred Howard](#)
- Horton Plaza, 5321 Horton St
- 8 tall Bronze sculptures made from African coins melted down.
- 2024
- City Murals
- Mildred Howard (b. 1945, San Francisco, CA) is best known for her multimedia assemblage work and installations. Howard completed her Associates of Arts Degree & Certificate in Fashion Art at the College of Alameda, Alameda, CA in 1977 and received her M.F.A. from Fiberworks Center for the Textile Arts at John F. Kennedy University in Berkeley, CA in 1985.



Saverio & Daisy (Navel)

- [Hank Willis Thomas](#)
- 4384 46th Street
- Orange thought bubble of rolled steel and enamel paint
- 8' x 117 5/8' x 24'
- 2018
- 1% Private Public Art - Site Specific
- Hank lives and works in Brooklyn, NY as a conceptual artist working primarily with themes related to perspective, identity, commodity, media, and popular culture. His work has been exhibited throughout the United States and abroad including the International Center of Photography, Guggenheim Museum Bilbao, Musée du quai Branly, Hong Kong Arts Centre and the Witte de With Center for Contemporary Art.



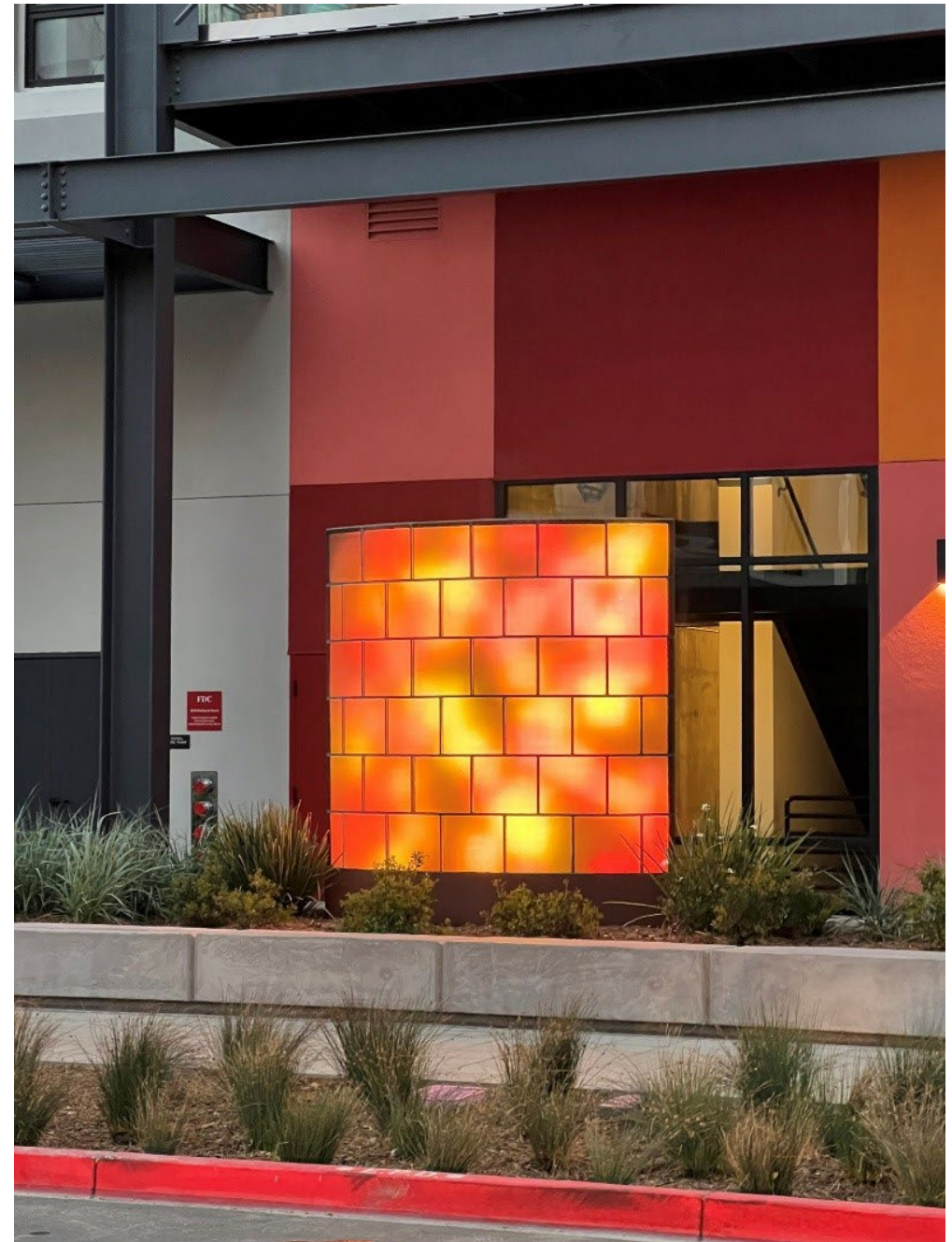
Modified Social Bench NY #12

- [Jeppe Hein](#)
- 4384 46th Street
- Red powder-coated aluminum
- 2023
- 1% Private Public Art - Site Specific
- Based on a long-term research on the topic of proxemics and distance and inspired by traditional as well as modern New York benches to be found in the Central Park for example, a new series of Modified Social Benches emerged. Their design borrows their basic form from ubiquitous park or garden benches, but is altered to various degrees to make the act of sitting a conscious physical process. Thus, the benches question the spatial separations in social situations and challenge the amount of space that people feel necessary to set between themselves and others. The Modified Social Benches NY are intended to break with those behavioural patterns in public space, since even contact-avoiding people allow bodily closeness in limited space. With its modifications, the benches transform its surroundings into places of social activity and foster dialogue between the users and the passers-by.



Untitled

- [Jim Campbell](#)
- Mixed Media: Corten steel, cast glass, silicone, custom electronics
- 7' x 7'
- 4310 Hubbard Street
- 1% Private Public Art - Site Specific
- He has two Bachelor of Science Degrees in Mathematics and Engineering from MIT and as an engineer holds nearly twenty patents in the field of video image processing. His 2018 piece 'Day for Night' is a permanent LED installation that comprises the top nine floors of the 61-story Salesforce Tower





Your Way

- [Jeppe Hein](#)
- Mixed Media
- 7.28' x 14.11' x 10.01'
- 4311 Hubbard Street
- 1% Private Public Art - Site Specific
- Two curved lines of mirror lamellae placed equal distances apart intertwine to an accessible labyrinth. The installation can be entered from both sides, as the distance between the lines offers enough space to walk along the labyrinth. With the alternation between reflections of the viewer and the location in the mirror lamellae, and views to the outside - be it an interior space - offered by the opening between them, a blurred perception of space arises. Reality and reflection combine to produce an unfamiliar and disorientating situation similar to the experience in a labyrinth that is increased by the movement of the viewer.

